

## Rac2

**Catalog Number:** 21027

**Gene Symbol:** RAC2

**Description:** Anti-Rac2 Rabbit Polyclonal Antibody

**Background:** Small GTPases are a super-family of cellular signaling regulators. Rac belongs to the Rho sub-family of GTPases that regulate cell motility, cell division, and gene transcription. GTP binding increases the activity of Rac, and the hydrolysis of GTP to GDP renders it inactive. GTP hydrolysis is aided by GTPase activating proteins (GAPs), while exchange of GDP for GTP is facilitated by guanine nucleotide exchange factors (GEFs).

**Immunogen:** A synthetic peptide from a unique C-terminal region of Rac2

**Tested applications:** ELISA, WB, IHC

**Recommended dilutions:**

ELISA 1:100-1:5000

WB 1:100-1:2000

IHC 1:100-1:1000

**Concentration:** 0.2 mg/ml

**Clonality:** Polyclonal

**Purity:** Purified from serum

**Format:** Liquid

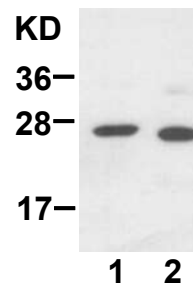
**Preservative:** No

**Constituents:** PBS (without  $Mg^{2+}$  and  $Ca^{2+}$ ), pH7.4, 150 mM NaCl, 50% glycerol

**Species Reactivity:** Anti-Rac2 antibody recognizes Rac2 from vertebrates.

**Storage Conditions:** Store at  $-20^{\circ}C$ . Avoid freeze / thaw cycles

### Western blot:



WB: anti-Rac2 pAb

### Western blot analysis of Rac2 proteins.

HepG2 (lane 1) and EC-1 (lane 2) whole-cell lysates were used for Western blots with the polyclonal anti-Rac2 antibody (Cat. # 21027).